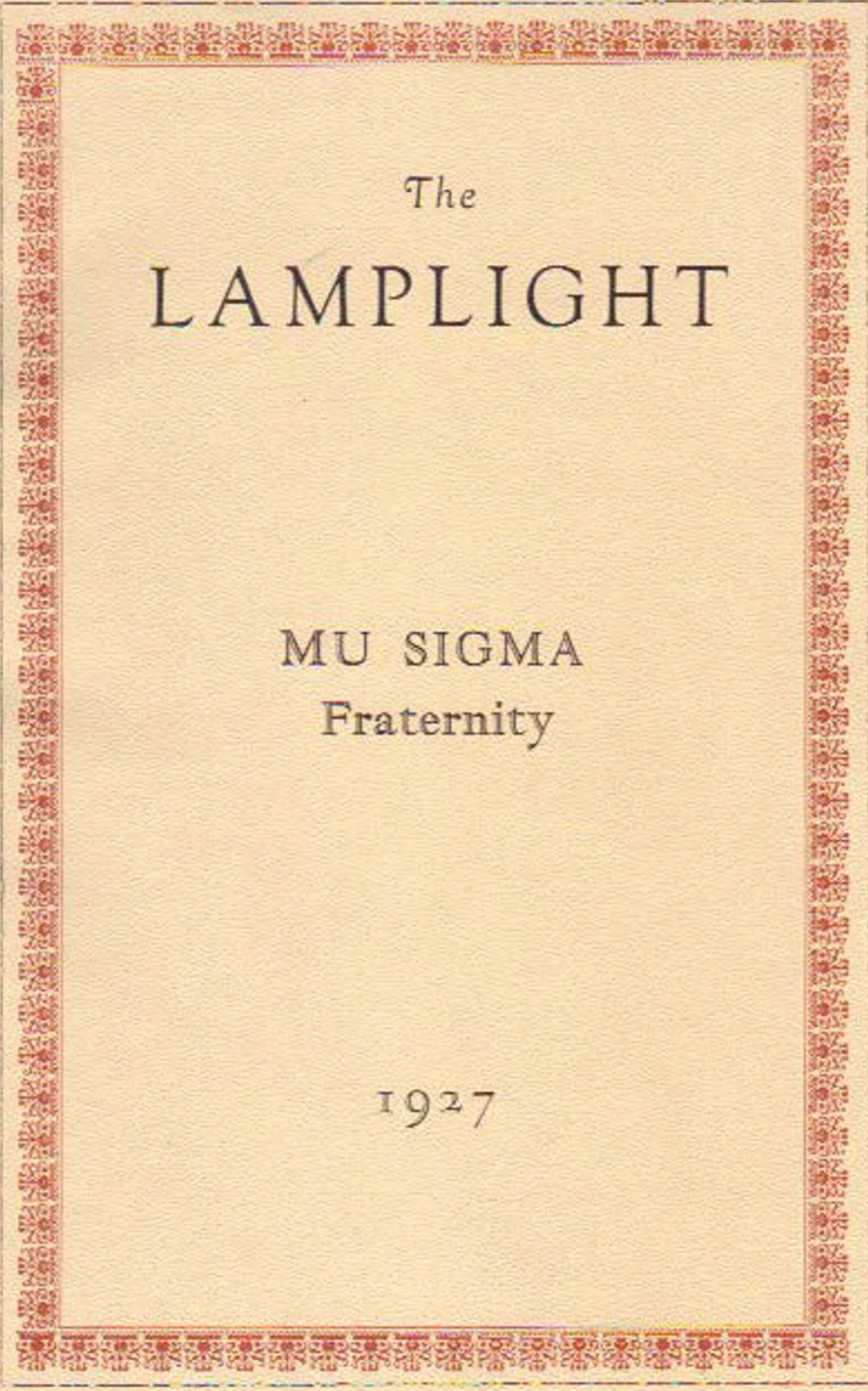




THE LAMPOGLIGHT



The
LAMPLIGHT

MU SIGMA
Fraternity

1927

The Mu Sigma Creed

I BELIEVE in the Mu Sigma Fraternity as a Brotherhood of Men inspired by the Fatherhood of God: a noble purpose expressed in a noble army. I believe in intellectual progress as a background for lasting friendship. I believe in the sober black of seriousness and reflection welded with the gold of promise and praise. I do not believe in capitalizing my membership or in publicity, nor do I believe in affiliating with any other organization which will detract from my obligation to Mu Sigma. It has been a source of enthusiasm to me in my youth; therefore let it be a means of pride and comfort as I grow older.

I therefore believe it is my duty to my Fraternity to love it; to respect its teachings; to guard its rituals; and to direct my own life so as to give a greater glow to our sacred lamp as it is passed down the ages to our unborn brothers.

History of Omega Chapter

BANGOR, MAINE.



OME years ago in Bangor, Maine, a group of men consisting of Albert Schiro, Sidney Schiro, Henry Paul, Arthur Dennis, Nathan Cohen, Arthur Lipsky, and Archibald Kamenkowitz organized the Epsilon Eta Fraternity in the Bangor High School. The purpose of this organization was to bring together men of kindred ideas for the promotion of social, intellectual, and moral advancement. It was the idea of Epsilon Eta not to admit to membership any man who was not of the highest character, ability, ambition, and congenial disposition. Its further purpose was the constant contact of men of this type as an aid to the development of individual character.

As the membership in this organization increased, the great possibilities for its future was revealed, and when sufficiently strong the original intention of its founders to become a part of a national organization became a reality.

On May 22, 1921, through the efforts of Brother Percy Greenberg of Nu Chapter, the Epsilon Eta Fraternity became the Omega Chapter of Mu Sigma. Twelve men of the fraternity were given the rituals by Brother Percy Greenberg. From the very inception of Omega's existence, the chapter has been zealous in its support of every activity of the fraternity. Its members were also extremely active in high school affairs, being represented in all school organizations—athletic, musical, and social, among others.

The scholarship of the Omega men of Mu Sigma has been higher than that of any other fraternity at the Bangor High School. As a consequence, this organization is held in high esteem by the faculty.

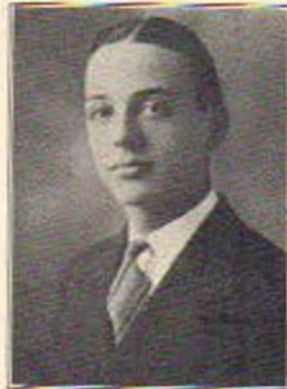
It was through the initiative and insistence of Omega that the Alpha Omega Chapter at Portland, Maine, was installed.

Since its existence, the Omega Chapter has increased in numbers and in spirit. Members of the chapter stand well in the community, are popular with their fellows, and have carried on, in accordance with the strict demands of Mu Sigma's rituals. An example of Omega's spirit is best illustrated by the fact that when the Grand Lumen in 1926 paid his official visit to the Omega Chapter, every Mu Sigma man in the State of Maine was present to greet him at the luncheon arranged in his honor. Such an out-turning was a tribute not alone to the Grand Lumen but to the spirit which permeates Omega. Omega has made such rapid strides in the short period of its existence that it ranks today as probably the most spirited and solid of Mu Sigma chapters. It will not remain content until it has earned from the other chapters of the fraternity the recognition of being the most sincere, ambitious, active and best chapter in the national organization.

Page 114



EDWARD A. ALLEN
Initiated June 13, 1926
Student



SHIRLEY BERGER
Initiated January 12, 1924
Student
Chairman of Social Committee
Fiscus, Ora, Filium
Delegate to Convention



PHILIP BYER
Initiated 1922
Shoe Salesman
Fiscus



PHILIP R. COHEN
Initiated 1923
Student



HAROLD M. CUTLER
Initiated February 6, 1925
Student



LAWRENCE MARK CUTLER
Initiated December 15, 1921
Student
Fillum



LOUIS DEANE
Initiated 1927
Salesman



BEN J. DORSKY
Initiated November, 1921
Projectionist
Ora, Fiscus, Lumeu
Chairman Social Committee



SAMUEL F. GINSBERG
Initiated February 22, 1922
Department Store



ISADOR K. GOLDSMITH
Initiated 1920
Clothier
Filmm



LAWRENCE GOLDSMITH
Initiated May, 1922
Clerical Work



SAMUEL A. GOLDSMITH
Initiated 1923
Student



JACOB M. GROSS
Initiated December 9, 1924
Student



ARCHIBALD E. KAMENKOVITZ
Initiated May 22, 1921
Student
Lumen, Filium, Org
Social Committee
Grand Filium



MORRIS LEAVITT
Initiated June 15, 1924
Connectionery
Discus



SAMUEL H. LEVINE
Initiated February, 1923
Student
Ossa, Lumen



M. EARL LIEBERMAN
Initiated May 30, 1923
Ladies' Furnishings



ARTHUR A. LIPSKY
Initiated 1920
Dental Surgeon



GEORGE ALLEN LIPSKY
Initiated December, 1922
Student
Chairman Social Committee
Trustee



MAX L. MARCUS
Initiated April 18, 1926
Student