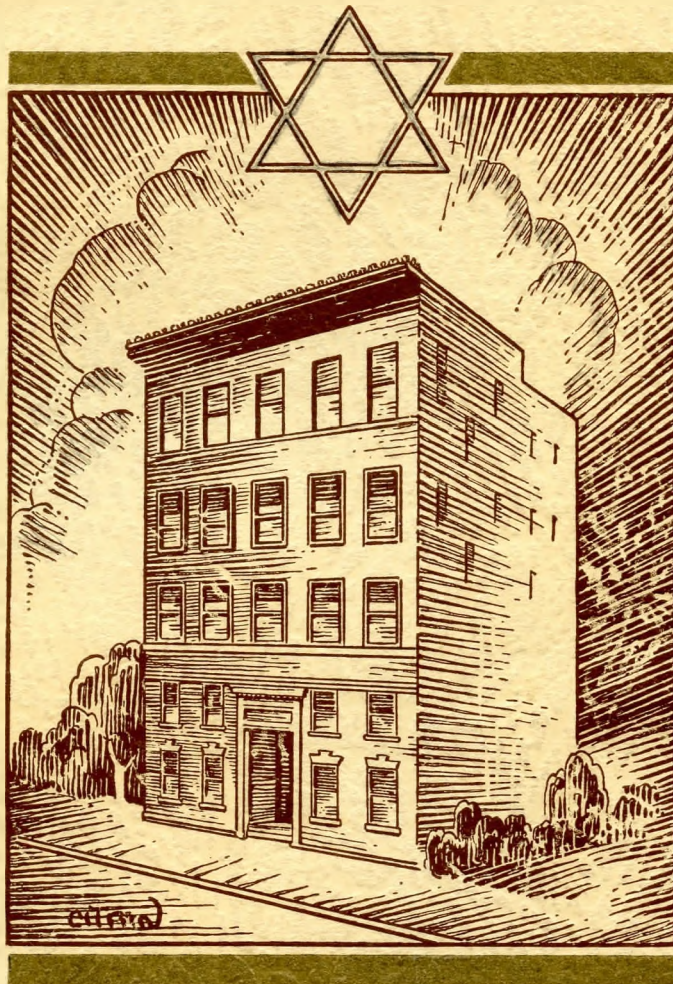


DEDICATORY PROGRAM



JEWISH COMMUNITY CENTER

Portland, Maine

NOVEMBER 13-20, 1938

CHESHVAN 5699

"There is hardly a field of cultural endeavor, a subject of Jewish interest, a form of physical recreation, a sharing in group activity of opportunity for communal participation, that does not find expression in some phase of the program of the Jewish Center. Life in the Center has for many thousands of children, young people and adults, become a rich experience in the unfoldment of personality and a valuable training for purposeful living."

*Harry L. Glucksman,
Late Executive Director,
Jewish Welfare Board.*



Foreword

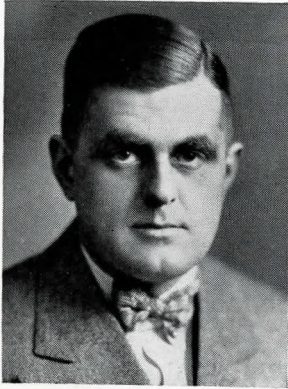
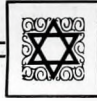
Throughout the centuries, Jewish life has manifested itself in communal activities. Social service, the handmaiden of social justice, is traditionally a Jewish characteristic. The concept of social justice reached the stage of perfection with the Prophets. In Jewish life there always had to be a common meeting place whence emerged the plans for service to the community. The Beth Hamedrash was not only the house of worship; it was the meeting ground where the Jews congregated to discuss and promulgate the means for service to all Jewish society. The Community Center movement is, therefore, not new in aims and purposes; in its physical aspects, however, and in its opportunities for enlarging the sphere of social service, the Center is definitely a new and progressive idea.

The Dedication of this new Community Center building marks a noteworthy epoch in the history of Portland Jewry. For the first time there has been made possible a beautiful building of large proportions, capable of serving the physical and cultural needs of the young and the old, under competent and constructive leadership and direction.

The Dedication of this Center demands that historical record be made of this event. For that purpose this Souvenir Book has been provided. Attractive in form and content, it records for all time the entire program of a Week of Dedication. There are no advertisements because it was our earnest desire not to make of the occasion a commercial venture. We hope you will like this Book and that you will take it home with you and keep it as an everlasting reminder of what can be accomplished for the common good by a united Jewry.

ISRAEL BERNSTEIN,
Editor.

WE ACKNOWLEDGE WITH THANKS THE ASSISTANCE OF
MR. MYRON M. CITRIN WHO FURNISHED THE SKILLFUL
DRAWING FOR THE FRONT COVER, AND THE GANNETT
PUBLISHING COMPANY WHICH FURNISHED THE
PHOTOGRAPHS.



State of Maine
Executive Department
Augusta



LEWIS O. BARROWS
GOVERNOR

October 28, 1938

Louis Bernstein, President
Jewish Community Center Building Campaign
119 Exchange Street
Portland, Maine

Dear Mr. Bernstein:

I acknowledge receipt of your letter of the twenty-fifth, containing a cordial invitation to attend the dedicatory exercises of the Jewish Community Center on Sunday, November thirteenth.

I shall be glad to accept your invitation and shall plan on being present at the time specified.

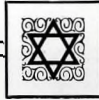
May I not take this opportunity to commend the enterprise and initiative of the Jewish citizens of Portland in completing this Community Center and I confidentially believe it will add much to your pleasure and enjoyment.

Very sincerely yours,

Lewis O. Barrows

GOVERNOR

LOB/s



President's Message



Louis Bernstein
PRESIDENT,
JEWISH COMMUNITY CENTER

An ideal, a mandate, and work carried out in chronological order have made it possible for that which was once a dream now to become a reality.

Let us turn back a few pages of history. In December of 1936 we closed a most successful campaign to pay off the mortgage on our old Community Center Building on Wilmot Street. This campaign awakened the city to the need of an organized front and then to the crying need of a new, permanent and completely adequate Community Center. We kept our splendid organization intact. We voted to incorporate and completed the necessary details. Then in 1937 we grasped the opportunity to purchase the Pythian Temple Building and took an option for 90 days. In January of 1938 we called a mass meeting of Portland Jewry and at that meeting the city unanimously voted to purchase the present building and convert it into a Community Center.

At this stage the Board of Directors, legally consisting of 15 members, voted then to increase its number to 50 and in addition thereto, to establish an Advisory Council of 25. This was a very difficult task but was done to the best of our ability. We offer no apologies for our selection, but we do offer our apologies to those who were anxious to serve but were not included on account of the limit placed upon us. We can assure them that there is a definite place for all to serve on various important committees.

On March 6, 1938, we entered upon our campaign for the building fund and on March 20, 1938, we were pleased to report that the city had responded nobly and the campaign had gone over the top.

This brings us to the spring of this year. One tour of the building will tell the story from then on.

Space does not permit me to pay the deserving credit due the various chairmen and their committees. Suffice it to say that no president of any organization or project ever had a more helpful, willing and cooperative group of men and women with whom to work. It has been my pleasure and good fortune to have this group at my beck and call, and I sincerely hope that the splendid spirit and enthusiasm displayed during this trying period will lead us to greater accomplishments in the future.

We must pledge ourselves to carry on to make this fair city of ours a better community in which to live and thus enjoy a fuller, more wholesome and happier life.



Rabbi Mendell Lewittes

Message from Our Rabbi

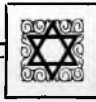
THE JEWISH CENTER IN AMERICAN LIFE

With justifiable pride and sense of achievement Portland Jewry welcomes the Community Center to the family of our Jewish institutions. With the opening and the future activities of the Center we are developing in Portland a rounded-out Jewish community, alive and responsive to the many needs of American Jewish life. A gap has been filled, a crying need has been supplied. No existing institution has been supplanted or superseded, but that which was lacking has come to take its rightful place in the scheme of Jewish activity.

The Jewish Center as already operating in numerous American communities is based upon the fundamental proposition that Jewish life and Americanism are compatible and mutually complementary. Many Jews have misinterpreted both Judaism and Americanism and have thus come to the conclusion that a strengthening of one means the weakening of the other, that the acceptance of the latter implies the abandonment of the former. In seeking to become part and parcel of the American way our youth in particular have forsaken the way of their elders and have thereby jeopardized the future vitality of American Judaism. The task of the Center is to demonstrate the fallacy of this viewpoint by the actual harmonization in its program of these two factors in our heritage and environment. It seeks to interpret correctly and clearly to our youth the values of the Jewish tradition and the American tradition so that they can understand the many points of contact between them and appreciate the distinct contributions of each to a mature and healthy way of life.

With the full measure of cooperation and support which it deserves the Portland Community Center can fulfill its important function in our community. Its success in bringing to our youth this vital message depends upon our response to its demands. Let us show our appreciation to those noble spirits who have spared no personal inconvenience in order to open the doors to the public by ensuring the active continuance of every part of its program. Especially are we anxious to see the efforts, courage and practical wisdom of our new director, Mr. Norman I. Godfrey, crowned with the fruits of success.

RABBI MENDELL LEWITTES.



Greetings from
Chairman of
Building and Dedication
Committees



Abraham S. Levey
CHAIRMAN, BUILDING AND
DEDICATION COMMITTEES

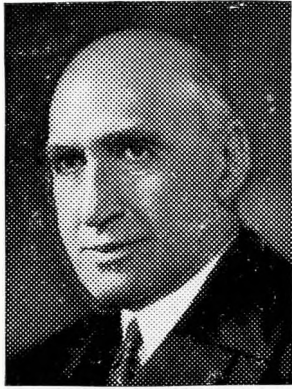
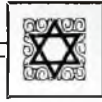
It is my honor and pleasure to serve the Jewish Community Center in a dual capacity: first, as chairman of the building committee, and second, as chairman of the Dedication Committee. At the outset, let me take this opportunity of extending to the entire membership of both committees my sincerest appreciation for the unstinted time and devoted attention which each and every one of them has given to the making of this building and its dedication a success. Special mention must be made of our executive director, Norman I. Godfrey, whose loyal and devoted cooperation has been of tremendous value.

In planning the arrangement of the building, we had before us the single thought of providing space and facilities for the young and old, where they would assemble, and participate in Jewish activities so as to make us all better Jews and better Americans; and it is our hope that you all will avail yourselves of the opportunities the building presents to you.

That which was but a dream yesterday is today a reality. We still have a tremendous task before us, and it is our solemn duty to pledge ourselves to carry on this glorious undertaking, and to make it an everlasting monument to the Jewish people of the City of Portland.

In this period of economic, social, and religious upheaval, with conditions calling for still greater help to the rising generation than ever before, it becomes necessary for us to adapt ourselves to these changing conditions, and prepare ourselves for the future. Since our future lies in the hands of our youth, it is essential that we prepare our youth for intelligent participation in American Jewish life. This is the ideal for which we strive. Let us go forward hand in hand together.

ABRAHAM S. LEVEY.



Honorable Irving Lehman
PRESIDENT, JEWISH WELFARE BOARD

Greetings from
Honorable Irving Lehman
President, Jewish Welfare Board

The dedication of the new home of the Jewish Community Center of Portland is an event that brings joy to all who contributed so generously of their energies and their means to the establishment of this Center.

It is not merely a building of brick and stone. It embodies both the spirit of the highest Jewish traditions and of love of country. In your new and well equipped home, young men and young women will gather under sound leadership for social recreation, for physical, mental and moral development. The Center will be a living force in their daily lives.

I congratulate the Jews of Portland and the leaders of the Center, not only for the material result of their labors, of which the new home is the monument, but for the opportunity which this building will afford for spiritual accomplishment in the future.

The dedication of the building is but a solemn prayer to the Lord,—“The work of our hands, establish Thou it.”



Greetings from
LOUIS KRAFT

Executive Director
Jewish Welfare Board



It is a source of genuine pleasure to learn that you are planning to dedicate the new home of the Jewish Community Center in Portland.

We have followed with the deepest interest the efforts of the men and women associated with you in the raising of the funds for the purchase and remodeling of this building. The opening of the Jewish Community Center home is the culmination of a fine display of an awakened Jewish spirit and of a strong sense of community feeling.

In these times particularly, when in other countries Jewish life is being heartlessly destroyed, the dedication of this new Jewish institution is truly symbolic of the undying faith of the Jews in the eternal value of their heritage and a tribute to their courageous determination to build on the free soil of America enduring instruments of Jewish group life.

The Y.M.H.A. and its sister organization, the Y.W.H.A., have kept alive the spark of Jewish interest through many years of struggle. You are to be congratulated on the achievement of a result long desired. I know that the new building and the rich program which its facilities make possible will fulfill your many hopes for a better and happier life for the many people who will participate in its activities.

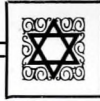
It is hardly necessary to say that the acquisition of the building and the provision of staff, important as they may be, are but the beginnings of the task that lies ahead. The Center will need the support of every member of the Jewish community if it is to fulfill its great purposes. May I urge upon every Jewish citizen that he give the organization the maximum of his co-operation.

With all good wishes, and with assurance of our deep interest and continued aid, I am

Sincerely yours,

LOUIS KRAFT,

Acting Executive Director.



Most Rev. Joseph E. McCarthy, D.D.
BISHOP OF PORTLAND

Greetings from the
Most Rev. Joseph E. McCarthy, D. D.,
Roman Catholic Bishop of Portland

I have just learned, with real delight and keen interest, of the coming dedication of your Community Center on Cumberland Avenue, with fitting ceremonies on November Thirteenth.

May I not be permitted to join the legion of your admiring friends in extending to your very worthy members my heartfelt and sincere congratulations on this memorable day.

I am not unmindful of the task you set before your good people in collecting funds for this much desired project, nor can I forget how remarkably successful you accomplished your heart's desire, solely among your own good people, if my memory does not fail me.

And now you are about to gather in the precious fruits of that joyous labor and receive the just reward of that cherished hope in realization of this happy Day of Dedication.

Your intimate friends will be with you to enhance the glory and joy of the Day, your own delightful Jewish people, so truly deserving, will honor you with their presence, your fellow citizens, without distinction of race or creed, will deem it a privilege to join your ranks on the day inaugurated for the ceremony, and I, myself, least of all, count it a genuine pleasure to voice the sentiments of my catholic people in Portland, in wishing you and your devoted associates of our community, the most cherished blessings from heaven upon a work so nobly conceived for the welfare of this city and so honorably dedicated for the fraternal good of your deeply respected and beloved citizens of the Jewish Community.

I hope sincerely to be present with you on the occasion of dedication, if possible, but if not possible, shall most willingly delegate one of my good priests to represent me and my people.

With sentiments of the highest esteem, I remain,

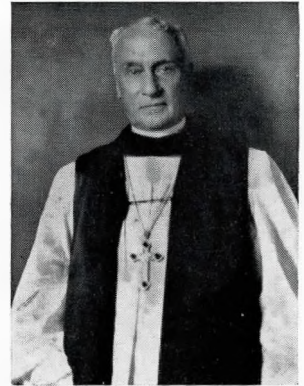
Very respectfully yours,

JOSEPH EDWARD MCCARTHY,

Bishop of Portland.



Greetings from the
Rt. Rev. Benjamin Brewster, D. D.,
Bishop of the
Protestant Episcopal Church
in the Diocese of Maine



Rt. Rev. Benjamin Brewster, D.D.

It should be a matter of gratification to all good citizens that the Jewish Community Center is to be opened soon. While our fellowship with one another as having the common inheritance of American citizens ought to prevent any undue emphasis upon racial or religious differences, it is good to have such a Community Center for this group.

The special activities, cultural and recreational, which will thus be possible for people, who might otherwise be without them, will make for better citizenship. I earnestly hope that our Jewish brethren and sisters, young and old, will profit from this undertaking.

In this democratic country of ours, let us all do our utmost to uphold valuable ancestral traditions. The splendid spiritual heritage of the Jewish race constitutes an important element in this free country, where we should welcome all that would tend towards the progress of mankind.

BENJAMIN BREWSTER.



Nathan A. Heller, Esq.
PRESIDENT, NEW ENGLAND
ASSOCIATED Y.M. AND Y.W.H.A.'S

Greetings from
NATHAN A. HELLER, Esq.
President of the
Associated Y.M. & Y.W.H.A.'s
of New England

I am of the belief that the development of the Portland Jewish Community Center is one of the outstanding achievements of Jewish life in New England in the past several years. I have followed the course of your progress with deep and abiding interest, and to me the fruition of the efforts of the Portland Community is a source of keen satisfaction.

On this occasion, the dedication of your Center, I extend the congratulations and good wishes of the Associated Young Men's and Young Women's Hebrew Associations of New England which I have the privilege to serve. That your Center will contribute significant values to a fruitful and rich community in Portland and to the general community, that it will provide an outlet for the expression of individual interests, and that it will form the framework of a sound coordinated Jewish society, I have every confidence.

I compliment the leaders who have given so unselfishly, to the fulfillment of an ideal which appeared so nebulous two years ago. I compliment the community upon its generous and intelligent support. Your inspiring enthusiasm can well serve as a guide and precedent in the growth of Jewish communal life in other important districts. May Portland continue to show the way in meeting the needs of our Jewish people in a civilization so beset with perplexity and confusion and thereby contribute to the building of sound Jewish life.

Very sincerely,

NATHAN A. HELLER,

President.



INTRODUCING--



Miss Jane Kodis
CHAIRMAN, PUBLICITY
AND PUBLICATIONS COMMITTEE



Mrs. Gerald Waxman
CHAIRMAN, DRAMA COMMITTEE



Mrs. Edward J. Berman
VICE-PRESIDENT



Mrs. Harris Lait
CHAIRMAN,
RESERVATION COMMITTEE



Mrs. Theodore Wasserman
PRESIDENT, Y. W. H. A.



Dr. Solomon Golodetz
CHAIRMAN, LIBRARY COMMITTEE



Julius Greenstein
CHAIRMAN, PUBLICITY COMMITTEE



Shepard Cutler
CO-CHAIRMAN,
GENERAL RECEPTION COMMITTEE



INTRODUCING--



Mrs. Abraham L. Kramer
CO-CHAIRMAN,
DECORATION COMMITTEE



Mrs. Maurice Davis
CO-CHAIRMAN,
HOSPITALITY COMMITTEE



Mrs. Ralph Diamon
CHAIRMAN, CATERING COMMITTEE



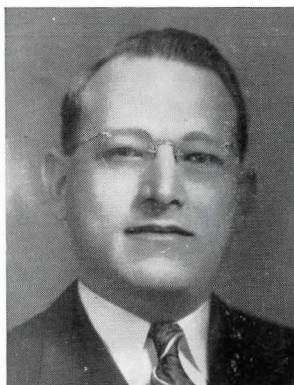
Max W. Simonds
VICE-CHAIRMAN,
EQUIPMENT COMMITTEE



George I. Lewis
CHAIRMAN, ESCORT COMMITTEE



David Epstein
PRESIDENT, Y. M. H. A.



Maurice Davis
CLERK



Dr. Cyrus K. Briggs
CHAIRMAN, ATHLETIC COMMITTEE



Greetings from
SAMUEL JOSLOWITZ
Field Secretary for
New England
Jewish Welfare Board



Samuel Joslowitz
FIELD SECRETARY FOR NEW ENGLAND
JEWISH WELFARE BOARD

It is with stirring emotions that I write this message. In the three years of my associations with Portland Jewry I have grown to feel a loyal kinship and rooted interest, as one of the community. May I hope you will permit me to enjoy the status of an adopted son, to share in your "simchas" and to participate in your accomplishments.

The achievement you are now celebrating is outstanding in New England Jewish history. Transcending all factors contributing to the fulfillment of your objectives is the fact that the democratic process, the inclusion of the full Jewish community in the project, obtained as you moved from climax to climax. You will remember the revitalization of the Y.W.H.A. in the fall of 1935. You will remember the campaign to discharge the mortgage on the old building in 1936. You will remember the meeting early in 1938 which paved the way for the present magnificent structure. And you will remember the 1938 campaign and the subsequent efforts which made possible final goals. Indeed enduring pride is your remuneration, and I share this sentiment with you.

With difficulty I place myself in an objective position to congratulate you. All New England does so. Rather would I join hands with you in the human chain of Portland, raising a common voice in songs of joy and gratitude. My feelings are well known to you.

The completion of the physical building of the Portland Jewish Community Center is the end of a major undertaking. There now remains the important responsibility of filling the building with qualitative activity satisfying the varied populace. Bear in mind that civic duty never ends; continue your efforts toward desirable results with the same enthusiasms, morale and inspiration that contributed so richly to the initial aim.

It is my fervent prayer that the Jewish Community Center shall symbolize for all time the unity, strength, and high plane of Portland Jewry. Humbly, I salute a wholesome community which merits recognition and praise in the House of Israel. Warmly and sincerely I say "Mazel Tov."

Very sincerely,
SAMUEL JOSLOWITZ,
Field Secretary.



Honorable Edward C. Berry
CHAIRMAN, PORTLAND CITY COUNCIL

Greetings from the
Chairman of the
Portland City Council

The entire citizenry of Portland unite in wishing the New Jewish Community Center every possible success, and many, many years of useful service in the community.

Your new home, located in the very heart of the city, and admirably adapted for its purposes, is pre-destined to play a very important part in the social, religious, and economic life of our city.

This new home will give you the opportunity for needed expansion of your various organizations, all of which we consider as real assets to Portland.

Please accept our most sincere congratulations, and best wishes for a long and continued success.

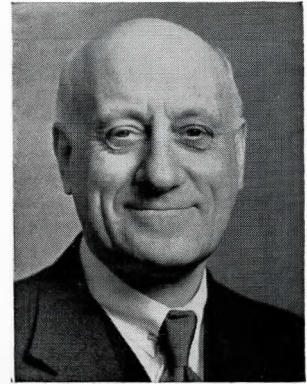
Sincerely yours,

EDWARD C. BERRY,

Chairman Portland City Council.



Greetings from City Manager



Honorable James E. Barlow
MANAGER, CITY OF PORTLAND

I am very glad to accept the invitation to be present at the opening of your Jewish Community Center on Cumberland Avenue on November 13th.

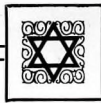
Let me take this opportunity to congratulate the local Jewish people in having the foresight and the courage to undertake this project. It can be, and I know it will be, a tremendous asset in providing wholesome recreation and the benefits of group activities to many of our present and future citizens. With the modern tendency to shorten the hours of labor the problem of the use of leisure time becomes very important and the step you are taking is a most wise one.

Congratulations!

Very truly yours,

JAMES E. BARLOW,

City Manager.



Norman I. Godfrey
EXECUTIVE DIRECTOR
JEWISH COMMUNITY CENTER

Greetings from the
Executive Director of the
Jewish Community Center

"Behold! How good and pleasant it is when brethren dwell together in unity."

Truly, it is a blessing to be privileged to share with you, the joy and happiness of this significant occasion, the Dedication of the Jewish Community Center. Humbly, gratefully, and ever mindful of the task entrusted to me, I acknowledge the great debt I owe to all of you, whose unselfish devotion, unfailing loyalty, and inexhaustible patience have served as a beacon light guiding and encouraging me through the past several months of adjustment and adaptation to a new community.

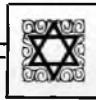
This day marks the fulfillment of a dream and the realization of an ideal which motivated the Jewry of Portland to make untold sacrifices in order that this building and all that it symbolizes might become a living monument to the courage and perseverance which have characterized our people throughout the centuries, in their struggle to bring light, truth, and justice to all mankind.

Consecrated to the noble purpose of perpetuating and developing Jewish life upon the highest possible plane, in consonance with the traditions and ideals of the founding fathers of our great democracy, the Jewish Community Center enters now upon its course of service devoted to the enrichment of the individual personality and enhancement of the group life of American Jewry.

To serve you; to bring to young and old wholesome experiences—social, cultural, and recreational; to make the Center in reality a Jewish home for all; these are the purposes to which I dedicate my service. Proudly, we stand upon the threshold of a new community life in Portland.

The doors are open—We bid you welcome!

NORMAN I. GODFREY.



COMMITTEES



DEDICATION WEEK COMMITTEE

EDWARD J. BERMAN	DR. SOLOMON GOLODETZ
MRS. EDWARD J. BERMAN	JULIUS GREENSTEIN
ISRAEL BERNSTEIN	MRS. ABRAHAM KRAMER
MRS. ISRAEL BERNSTEIN	DAVID LAVIN
DR. CYRUS K. BRIGGS	GEORGE I. LEWIS
JACOB CITRIN	RABBI MENDELL LEWITTES
SHEPARD CUTLER	MRS. LOUIS MATSON
AARON DAVIDSON	PHILIP REUBEN
SIDNEY DAVIDSON	JACOB RUBINSKY
MAURICE DAVIS	MORRIS SACKNOFF
MRS. MAURICE DAVIS	ABRAHAM SEIGAL
LEO GOLODETZ	MRS. THEODORE WASSERMAN

JOE WIGON

CHAIRMEN FOR DEDICATION WEEK

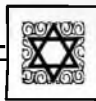
LOUIS BERNSTEIN <i>Sunday, Dedication Day</i>	JACOB CITRIN <i>Friday, Community Religious Program</i>
ABRAHAM SEIGAL <i>Monday, Jewish Cultural Day and Hadasah Reception</i>	EDWARD J. BERMAN <i>Saturday, Youth Program—Fraternity and Sorority Dance</i>
AARON DAVIDSON <i>Monday, Dedication of Recreation Floor</i>	LEO GOLODETZ <i>Sunday Morning, Sunday School Reception</i>
MORRIS SACKNOFF <i>Tuesday, Y.M.H.A.—Old Timer's Reunion</i>	JACOB RUBINSKY <i>Sunday Afternoon, Junior Rally</i>
JOSEPH WIGON <i>Wednesday, Organization Day—B'nai Brith</i>	MRS. ISRAEL BERNSTEIN <i>Sunday Evening, Mother and Daughter Banquet</i>
ISRAEL BERNSTEIN <i>Thursday, Community Dance—Council of Jewish Women</i>	

ESCORT COMMITTEE

GEORGE I. LEWIS, *Chairman*

HON. JACOB H. BERMAN	WILLIAM GOODMAN
SIDNEY DAVIDSON	ABRAHAM GOODSIDE
MAURICE R. DAVIS	JULIUS GREENSTEIN
DAVID EBENSTEIN	LEON HERMAN
ROBERT GOLDSTEIN	HYMAN MERSKY
HERMAN LEWIS	HON. MAX L. PINANSKY

LOUIS E. WEINER



GENERAL RECEPTION COMMITTEE

SHEPARD CUTLER, *Co-chairman*

PHILIP REUBEN, *Co-chairman*

DECORATION COMMITTEE

MRS. ABRAHAM KRAMER, *Co-chairman*

DR. SOLOMON GOLODETZ, *Co-chairman*

LEO GOLODETZ, *Co-chairman*

HOSPITALITY COMMITTEE

MRS. MAURICE DAVIS, *Co-chairman*

MRS. LOUIS MATSON, *Co-chairman*

PUBLICITY COMMITTEE

JULIUS GREENSTEIN, *Chairman*

SOUVENIR PROGRAM COMMITTEE

ISRAEL BERNSTEIN, *Chairman*

MISS BELLA COPE

MISS RUTH LEVINE

MISS DORIS LONSTEIN

MISS ALICE E. MODES

JACOB CITRIN

LESTER M. WILLIS

USHERS

Louis Abramson
Jacob Agger
Manuel Berenson
B. James Cohen
Charles Cohen
Maurice Cohen
Maurice Cox
David Cutler
Max D. Davis
Maurice Drees
David Epstein

Philip Gold
Abraham Gordon
Myer Gordon
Louis Grinker
Silas Jacobson
Ralph Lamport
David Lavin
Thomas Livingston
Myer Marcus
William Perlman

Theodore C. Perry
Max Rice
Edward Sacknoff
Myer Sacknoff
Abraham Serulnick
David Sivovlos
Benjamin Troen
Abraham Venner
Harry Weinman
Abraham I. Weismar

GUIDES

*The Guides, throughout the week of Dedication, will be furnished by Scout Troop, No. 6,
Boy Scouts of America.*

Scout Master
Assistant Scout Master
Assistant Scout Master

Morris Greenberg
William Schultz
Bertram Silverman

SCOUTS

Conant Kormetsky
Mark Levine
William Leve
Manuel Berensen
Raymond Broisman
Bernard Goodman
Milton Erlick
Howard Erlick
Isadore Abrahamson
Charles Cohen
Myron Mack

Jake Smith
Eugene Long
Abe Benjamin
Lewis Blumenthal
Alfred Chase
Armond Cooper
Robert Epstein
David Gold
Harold Goldberg
Julius Grunes
Leon Israelson

Mitchell Jacobson
Robert Jacobson
Morris Lane
Morris Silverman
Israel Oretsky
Myron Ross
Robert Rothschild
Milton Silverman
Morton Schlosberg
Hyman Micohen



Dedication Day

SUNDAY,
NOVEMBER 13, 1938



Louis Bernstein
CHAIRMAN OF THE DAY

PROGRAM

Etz Chaim Synagogue—1:30 P. M.

INVOCATION	-	-	-	-	-	-	-	Rabbi Mendell Lewittes
WELCOME	-	-	-	-	-	-	-	Louis Weinman, President of Synagogue
GREETINGS	-	-	-	-	-	-	-	Abraham S. Levey, Chairman Building Committee
THE OPENING KEY								

New Jewish Community Center—2:30 P. M.

OPENING OF DOOR

ENTRANCE OF GUESTS

INVOCATION	-	-	-	-	-	-	-	Rabbi Mendell Lewittes
STAR SPANGLED BANNER	-	-						
WELCOME ADDRESS, "PRESENTATION OF KEY"								Abraham S. Levey, Chairman of Dedication Committee
ADDRESS	-	-	-	-	-	-	-	Louis Bernstein, President, Jewish Community Center
GREETINGS	-	-	-	-	-	-	-	State of Maine—Honorable Lewis O. Barrows, Governor
GREETINGS	-	-	-	-	-	-	-	City of Portland—Honorable Edward C. Berry, Chairman
GREETINGS								Most Rev. Joseph E. McCarthy, D.D., Roman Catholic Bishop of Portland
GREETINGS	-	-	-	-	-	-	-	The Very Rev. Howard D. Perkins, Dean, Saint Luke's Cathedral
GREETINGS	-	-	-	-	-	-	-	Norman I. Godfrey, Executive Director
ADDRESS	-	-	-	-	-	-	-	Rabbi Mendell Lewittes
BENEDICTION								

Inspection and tour of the building will follow immediately after the exercises.



Abraham S. Levey
GENERAL CHAIRMAN

FORMAL DEDICATION Banquet

SUNDAY,
NOVEMBER 13, 1938
8.00 p. m.

PROGRAM

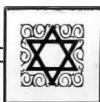
INVOCATION	- - - - -	Rabbi Mendell Lewittes
GREETINGS	- - -	Abraham S. Levey, Chairman Dedication Committee
INTRODUCTION OF TOASTMASTER, Louis Bernstein		
TOAST	- Mrs. Theodore Wasserman, President, Young Women's Hebrew Association	
DINNER	- - - - -	
GREETINGS		
YOUNG MEN'S HEBREW ASSOCIATION	- - -	James H. Davidson, President
YOUNG WOMEN'S HEBREW ASSOCIATION		Mrs. Edward J. Berman, Miss Ida Goffin, Mrs. Louis Matson
ADDRESS	- - - - -	Abraham S. Levey, General Chairman
ADDRESS	- - - - -	Rabbi Mendell Lewittes
ADDRESS	- - - - -	Norman I. Godfrey, Executive Director
ADDRESS	- - - - -	Dr. Mordecai Saltes, Director, Jewish Welfare Board

DEDICATION BANQUET COMMITTEE

MRS. THEODORE WASSERMAN	- - -	DINNER CHAIRMAN
MRS. GERALD WAXMAN	- - -	SECRETARY
MRS. EDWARD J. BERMAN	- - -	PROGRAM CHAIRMAN
MRS. MAURICE DAVIS	- - -	RECEPTION CHAIRMAN
MRS. HARRIS LAIT	- - -	INVITATION CHAIRMAN
MRS. RALPH DIAMON	- - -	CATERING CHAIRMAN
MRS. GERALD WAXMAN	- - -	DECORATIONS CHAIRMAN
MRS. HAROLD HALPERT	- - -	PUBLICITY CHAIRMAN
MRS. MAYO LEVENSON	- - -	TELEPHONE CHAIRMAN

RECEPTION COMMITTEE

Mrs. Harry Carvel	Mrs. Jacob Greene	Mrs. Jacob Potter
Mrs. Beacon Cohen	Mrs. Louis Helfont	Mrs. Philip Reuben
Mrs. Maurice Cohen	Mrs. Alfred Herman	Mrs. Samuel Seiger
Mrs. Norman I. Godfrey	Mrs. Abraham Kramer	Mrs. Samuel Silverman
Miss Ida Goffin	Mrs. David Lavin	Mrs. Harry Turitz
Mrs. Mitchell Goffin	Mrs. Mendell Lewittes	Mrs. Maurice Wagman
Mrs. Benjamin Goldberg	Mrs. Louis Matson	Mrs. Joseph Wigon
Mrs. Leo Golodetz	Mrs. Harry Potter	Mrs. Carl Zolov
		Mrs. Israel Bernstein



Jewish Cultural Day

MONDAY,
NOVEMBER 14, 1938



Abraham Seigal
CHAIRMAN OF THE DAY

PROGRAM

HADASSAH RECEPTION AND TEA—2:00 P. M.

INVOCATION

WELCOME - - - - - Abraham Seigal

SONGS OF PALESTINE - - - - - Choral Group

GREETINGS - - - Mrs. Elias Caplan, Past President, Senior Hadassah

GREETINGS - - - Miss Ethel Feldman, President, Junior Hadassah

HISTORY OF HADASSAH AND CONVENTION HIGHLIGHTS

Mrs. Abraham Simonds, President, Senior Hadassah

PRESENTATION OF J.N.F. CERTIFICATES - - - Mrs. Mendell Silverman

MUSICAL SELECTIONS - - - Miss Sarah Silverman
Accompanied by Mrs. Helen Barnett

ADDRESS - - - Mrs. Benjamin Lourie, National Director, Hadassah

RECEPTION COMMITTEE

Mrs. Sam Novick, *Chairman* — Mrs. Max Astor, *Co-chairman*

Mrs. Abraham J. Bernstein
Mrs. J. S. Bernstein
Mrs. Elias Caplan
Mrs. Goldie Davidson
Mrs. Solomon Golodetz
Mrs. Edward Jaffee

Mrs. Aaron Karlin
Mrs. Myer Karlin
Mrs. Maurice Levine
Mrs. Ada Palmer
Mrs. Mendell Silverman
Mrs. Max W. Simonds

OPENING OF RECREATION FLOOR—7:00 P. M.

AARON DAVIDSON, *Chairman*, DR. CYRUS K. BRIGGS, *Assistant Chairman*

Dedication and Opening of Bowling Alleys, Billiard Room, and Handball Court



Yiddish Cultural Night

MONDAY,

NOVEMBER 14, 1938

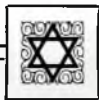
7.30 p. m.

AMERICA

WELCOME	-	-	-	-	-	-	-	Abraham Seigal, Chairman
SONG	-	-	-	-	-	-	-	Rev. Samuel Chesney
READING, FROM "TASHRACK"	-	-	-	-	-	-	-	Saul Shulman
ADDRESS, "OUR RESPONSIBILITY"	-	-	-	-	-	-	-	Jacob E. Rubinsky
SONG	-	-	-	-	-	-	-	Rev. Henry Rackoff
ADDRESS, "JEWISH EDUCATION"	-	-	-	-	-	-	-	Oscar Tabachnick, President, Hebrew School
SONG	-	-	-	-	-	-	-	Earl Rackoff, President, Young Israel
ADDRESS, "JEWISH CULTURE"	-	-	-	-	-	-	-	Rabbi Mendell Lewittes
HATIKVOH	-	-	-	-	-	-	-	Piano Accompaniment, Ethel Feldman
MOTION PICTURE, "LAUGHTER THROUGH TEARS"	-	-	-	-	-	-	-	

RECEPTION COMMITTEE

PHILIP ABRAHAMSON	-	-	-	-	-	-	-	PRESIDENT SHAAREY TPHILOH SYNAGOGUE
ABRAHAM J. BERNSTEIN	-	-	-	-	-	-	-	GABBI, CHEVRA MISHNAYIS
MRS. ABRAHAM J. BERNSTEIN	-	-	-	-	-	-	-	PRESIDENT OF LADIES' AUXILIARY, HEBREW SCHOOL
MORRIS CRASNICK	-	-	-	-	-	-	-	GABBI, CHEVRA TEHILLIM
MISS ETHEL FELDMAN	-	-	-	-	-	-	-	PRESIDENT, JUNIOR HADASSAH
ROBERT GOLDSTEIN	-	-	-	-	-	-	-	PRESIDENT, PORTLAND ZIONIST DISTRICT
ABRAHAM A. GREENBERG	-	-	-	-	-	-	-	PRESIDENT, MIZRACHI
ABRAHAM ISENMAN	-	-	-	-	-	-	-	GABBI, ANSHE SFAARD SYNAGOGUE
GEORGE LAMPORT	-	-	-	-	-	-	-	PRESIDENT, ANSHE SFAARD SYNAGOGUE
MRS. JACOB LAMPORT	-	-	-	-	-	-	-	PRESIDENT OF LADIES' AUXILIARY ANSHE SFAARD SYNAGOGUE
JOSHUA LEDERMAN	-	-	-	-	-	-	-	PRINCIPAL, PORTLAND HEBREW SCHOOL
ABRAHAM S. LEVEY	-	-	-	-	-	-	-	PRESIDENT, VAAD HOIR
TRITEL MALAMED	-	-	-	-	-	-	-	MASHGIACH
JOSEPH MODES	-	-	-	-	-	-	-	TEACHER, PORTLAND HEBREW SCHOOL
SAMUEL NELSON	-	-	-	-	-	-	-	PRESIDENT, POALI ZION
HYMAN NORKIN	-	-	-	-	-	-	-	TEACHER, PORTLAND HEBREW SCHOOL
MICHAEL RUBINSKY	-	-	-	-	-	-	-	GABBI, CHEVRA SHAAS
NATHAN SAPOLL	-	-	-	-	-	-	-	GABBI, CHEVRA KADISHE
REV. HENRY SIMANSKY	-	-	-	-	-	-	-	SECRETARY, JEWISH NATIONAL FUND
MRS. HYMAN SIMANSKY	-	-	-	-	-	-	-	PRESIDENT, MIZRACHI LADIES' AUXILIARY
MRS. ABRAHAM SIMONDS	-	-	-	-	-	-	-	PRESIDENT, SENIOR HADASSAH
MRS. ISRAEL TABACHNICK	-	-	-	-	-	-	-	PRESIDENT, LADIES' AUXILIARY, SHAAREY TPHILOH SYNAGOGUE
MRS. BEN TROEN	-	-	-	-	-	-	-	PRESIDENT, LADIES' AUXILIARY, ETZ CHAIM SYNAGOGUE
LEWIS WEINMAN	-	-	-	-	-	-	-	PRESIDENT, ETZ CHAIM SYNAGOGUE



Y. M. H. A.
Old Timers' Night

TUESDAY,
NOVEMBER 15, 1938
6.30 p. m.



Morris Sacknoff
CHAIRMAN OF THE DAY

PROGRAM

INVOCATION	-	-	-	-	-	-	-	Rabbi Mendell Lewittes
WELCOME	-	-	-	-	-	-	-	Morris Sacknoff
INTRODUCTION	TOASTMASTER	-	-	-	-	-	-	David Lavin
TOASTMASTER	-	-	-	-	-	-	-	James H. Davidson
MEMORIAL SERVICES								
ADDRESS	-	-	-	-	-	-	-	Honorable Jacob L. Wiseman
Greetings from Associated Y.M. and Y.W. of New England								
REMARKS BY PAST PRESIDENTS OF THE YOUNG MEN'S HEBREW ASSOCIATION								
MUSIC								
ENTERTAINMENT								
ANECDOTES								

PAST PRESIDENTS OF THE Y.M.H.A.

*John L. Davis	Israel Bernstein
Henry Gordon	William Perlin
Jacob H. Berman	James H. Davidson
*Samuel J. Sacknoff	Louis Bernstein
Henry N. Taylor	Jacob Agger
Morris Sacknoff	Saul Gerber
Mitchell Goffin	Samuel Citrin
Philip Reuben	Joseph Salhanick

* Deceased

Y.M.H.A. RECEPTION COMMITTEE

Jacob Agger
Louis Bernstein
Maurice B. Cohen
Shepard H. Cutler
James H. Davidson
David Bekelman
Wilfred Diamon
David Epstein
Dr. Solomon Golodetz

Abraham Gordon
Henry Gordon
Myer Gordon
Jules Greenstein
Hyman Jacobson
David J. Lavin
Rabbi Mendell Lewittes
David Nectow
Theodore C. Perry

Joseph Salhanick
Edward D. Sacknoff
Myer H. Sacknoff
Morris Sacknoff
Saul Sheriff
David Silverman
Abraham H. Simonds
Henry N. Taylor
Samuel Tellan



Joseph Wigon
CHAIRMAN OF THE DAY

Organization Night

WEDNESDAY EVENING
NOVEMBER 16, 1938
8.00 p. m.

B'nai B'rith

PROGRAM

GREETINGS - - - - - Joseph Wigon

RESPONSE - - Abraham Kramer, President, Cumberland Lodge 1137, B'nai B'rith

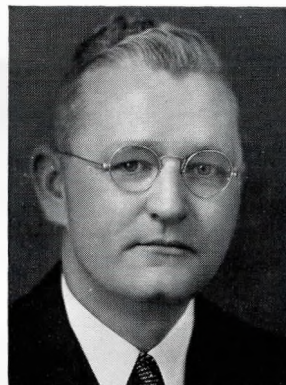
ADDRESS - - Dr. Elias Caplan, Chairman, Educational Committee, Cumberland Lodge

ADDRESS, "SUBVERSIVE INFLUENCES IN AMERICA"

Honorable James C. Oliver, Congressman, 1st Congressional District, Maine

COMMITTEE

DR. ELIAS CAPLAN, *Chairman*
UDELL BRAMSON
DR. DAVID BROWNSTONE
SAMUEL GOLDFARB
WILLIAM GOODMAN
HERMAN HIRSCH
SAMUEL KING
ABRAHAM KRAMER
RALPH LAMPORT
DR. HENRY POLLARD
DAVID RUBINOFF
MORRIS SACKNOFF
JACOB SAPIRO
LESTER SAPIRO
CARL WEBBER
ROBERT WEINSTEIN
DR. BENJAMIN ZOLOV
BENJAMIN ZULOFSKY



Honorable James C. Oliver
CONGRESSMAN, 1ST DISTRICT



Community Dance

THURSDAY,
NOVEMBER 17, 1938
8.00 p. m.

Council of Jewish Women



Israel Bernstein
CHAIRMAN OF THE DAY

PROGRAM

WELCOME - Israel Bernstein
RESPONSE - Mrs. Benjamin Zolov, President Portland Section, Council of Jewish Women
MUSICAL SELECTION
DANCING

Music by Nate Gold's Orchestra

Program Note

The Portland Council of Jewish Women is a section of the National Council of Jewish Women, the oldest Jewish Women's organization in America. Organized forty-five years ago, it has today a membership of 50,000 distributed over 200 sections in the United States and Canada. The Council's program is two-fold: it concerns itself with our obligation as Jewesses in the advancement of Jewish welfare and culture; it concerns itself with our obligations as American citizens in promoting the welfare of our communities and our country.

These services Council renders through its committees on Education, Immigration, Peace, Religion, Social Legislation, and Social Service. The Portland Council has parallel committees. Its Social Service work is outstanding. To our Jewish underprivileged children Council gives understanding assistance and guidance. To meet the costs of milk, medical attention, summer vacation, the Council raises funds through this annual dance.

RECEPTION COMMITTEE

GENERAL CHAIRMAN: MRS. LEWIS BERNSTEIN

PROGRAM COMMITTEE

CO-CHAIRMAN: MRS. SAMUEL J. SACKNOFF AND MRS. SAUL G. CHASON

Mrs. Jacob H. Berman	Mrs. John L. Davis	Mrs. Max Mersky
Mrs. Israel Bernstein	Mrs. Frank Greene	Mrs. David Nectow
Mrs. Harry Botwick	Mrs. Joseph Greene	Mrs. Morris Oransky
Mrs. Harry Carvel	Mrs. Harry Israelson	Mrs. Samuel Rosenthal
Mrs. Benjamin Clayman	Mrs. Edward Jaffee	Mrs. Carl Webber
Mrs. B. James Cohen	Mrs. Maurice Levine	Mrs. Benjamin Zolov

TICKET COMMITTEE

CO-CHAIRMAN: MRS. SAMUEL COHEN AND MRS. SAMUEL ISENBERG

Mrs. James Albert	Mrs. Frank Greene	Mrs. Morris Oransky
Mrs. Benjamin Clayman	Mrs. Joseph Greene	Mrs. Maurice E. Rosen
Mrs. Wilfred Diamond	Mrs. Hyman Mersky	Mrs. Max Rosen
Mrs. Maurice Bennett	Mrs. Alexander Kaatz	Mrs. Morris A. Spector
Mrs. Robert Goldstein	Mrs. Alex Lehrman	Mrs. Abraham Venner
	Mrs. Jacob Sapiro	

HOSPITALITY COMMITTEE

CHAIRMAN: MRS. NEWELL L. POTTER

Mrs. Joseph M. Bernstein	Mrs. William Goodman	Mrs. Mark Polakewich
Mrs. Samuel Cohen	Mrs. Albert Issokson	Mrs. Harold Potter



Jacob Citrin
CHAIRMAN OF THE DAY

Community Religious Program

FRIDAY EVENING,
NOVEMBER 18, 1938
8.00 p. m.

At Shaarey Tphiloh Synagogue

PROGRAM

INTRODUCTION OF CHAIRMAN	- - - - -	Abraham S. Levey
WELCOME	- - - - -	Jacob Citrin
GREETINGS: — Philip Abrahamson, President Shaarey Tphiloh Synagogue		
Louis Weinman, President, Etz Chaim Synagogue		
George Lamport, President, Anshe Sfaard Synagogue		
SABBATH SONGS —		
Combined Choirs, Conducted by Rev. Henry Rackoff and Rev. Samuel Chesney		
GREETINGS — Morris Sacknoff, President, Jewish Home for Aged		
Oscar Tabachnick, President, Portland Hebrew School		
William Goodman, President, United Hebrew Charities		
Abraham A. Greenberg, President, Mizrachi		
Earl Rackoff, President, Young Israel		
RELIGIOUS SONGS	- - - - -	Combined Choir
ADDRESS	- - - - -	Rabbi Mendell Lewittes
GREETING IN HEBREW	- - - - -	Nathan Wise, pupil of Hebrew School
REFLECTIONS	- - - - -	Norman I. Godfrey, Executive Director
RELIGIOUS SONGS	- - - - -	Combined Choir
ADDRESS	- - - - -	Rabbi William Drazin, Haifa, Palestine

RECEPTION COMMITTEE

Shaarey Tphiloh Synagogue:

Philip Abrahamson
Abraham J. Bernstein
Hyman Boxstein
Samuel Comeras
Julius Greenstein
Abraham Kramer
Myer Ross
Nathan Sapoll
Morris Sheriff
Maurice Silverman
Isaac Weisberg

Etz Chaim Synagogue:

Samuel J. Bramson
William Cohen
Nathan Markson
Maurice E. Rosen
Jacob E. Rubinsky
Barnett I. Shur
Louis Weinman

Anshe Sfaard Synagogue:

David Finkelman
Ralph Lamport
Lewis Lerman
Isaac Shainblum

Jewish Home for Aged:

Peter Diamon
Hyman Finn
Joseph Larkin
Harry Potter
Samuel Seiger
Isidore Tarr

Refreshments will be served in the vestry by the combined sisterhoods of

Congregation Shaarey Tphiloh, Mrs. Israel Tabachnick, *President*
Congregation Etz Chaim Synagogue, Mrs. Benjamin Troen, *President*
Congregation Anshe Sfaard Synagogue, Mrs. Jacob Lamport, *President*



Jacob E. Rubinsky
CHAIRMAN OF THE AFTERNOON



MOTHER AND DAUGHTER Banquet

SUNDAY EVENING,
NOVEMBER 20,
at 6.30



Mrs. Israel Bernstein
CHAIRMAN OF THE EVENING

PROGRAM

ANNE DAVIDSON, *Toastmistress*

INVOCATION	-	-	-	-	-	-	-	Mrs. Mendell Lewittes
STAR SPANGLED BANNER								
WELCOME TO GUESTS	-	-	-	-	-	-	-	Mrs. Israel Bernstein
RESPONSE FROM BUSINESS GIRLS	-	-	-	-	-	-	-	Jane Kodis
TOAST TO MOTHERS	-	-	-	-	-	-	-	Tena Shulman
TOAST TO DAUGHTERS	-	-	-	-	-	-	-	Mrs. Abraham M. Rapoport
INTRODUCTION OF MEMBERS OF ADVISORY BOARD	-	-	-	-	-	-	-	Toastmistress
INSTALLATION OF OFFICERS	-	-	-	-	-	-	-	Norman I. Godfrey, Executive Director
PRESIDENT'S ADDRESS	-	-	-	-	-	-	-	Ethel A. Levine
PLAYLET, "SHE MUST MARRY A DOCTOR"	-	-	-	-	-	-	-	Directed by Ethel Sheper
SINGING OF JEWISH SONGS	-	-	-	-	-	-	-	Assembly; Ruth Levine, Piano Accompanist
BENEDICTION								
HATIKVOH								
AMERICA								

COMMITTEE

ANNE DAVIDSON, *General Chairman*

INVITATIONS TO DAUGHTERS

Gertrude Comeras, *Co-chairman*
Sadye Slosberg, *Co-chairman*

INVITATIONS TO MOTHERS

Ida Isenman

PUBLICITY

Molly Finkelman

DECORATIONS

Marcia Ginsburg
Rose Berenson

PROGRAM

Ethel Sheper

FAVORS

Tena Shulman, *Co-chairman*
Minnie Shatz, *Co-chairman*

BANQUET CHAIRMAN

Lillian A. Davidson, *Co-chairman*
Rhoda Sigel, *Co-chairman*

TABLE APPOINTMENTS

Sadie Isenman
Anne Davidson

RECEPTION COMMITTEE

Jane Kodis, *Co-chairman*
Anna Swonkin, *Co-chairman*

USHERS

Anne Rubinsky
Reva Blumenthal
Lillian Davidson



INTRODUCING--



Morris Greenberg
CHAIRMAN, GUIDES COMMITTEE



Samuel Novick
VICE-CHAIRMAN,
EQUIPMENT COMMITTEE



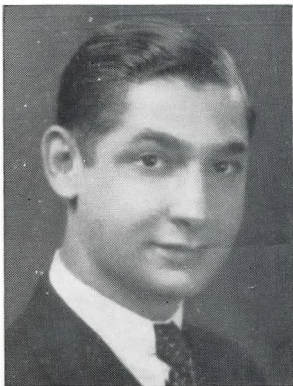
Philip Reuben
CO-CHAIRMAN,
GENERAL RECEPTION COMMITTEE



Mrs. Abraham Simonds
CHAIRMAN, ART COMMITTEE



Mrs. Louis Matson
CO-CHAIRMAN,
HOSPITALITY COMMITTEE



Harold K. Halpert
CHAIRMAN, MUSIC COMMITTEE



Aaron Davidson
CHAIRMAN, COMMITTEE FOR
DEDICATION OF RECREATION FLOORS



James H. Davidson
VICE-PRESIDENT, Y. M. H. A.



THE YOUNG WOMEN'S HEBREW ASSOCIATION

OUR HISTORY

The Y.W.H.A. boasts of a brilliant record of achievement in Portland. Its beginning, however, 31 years ago, was humble and modest. A handful of far-sighted young women met in a dark and dingy room on the fourth floor of a building located at Exchange and Middle Streets, and organized the first Y.W.H.A. in the city. The year was 1907.

Mrs. Louis Matson was its first president. The progress of the group was steady with its aims being first to aid destitute children and then to build a home for the Portland Jewish Aged.

Mrs. Samuel Seigar became the second president of the Y.W.H.A. in 1913, with Mrs. Eli Perry president in 1914, and Mrs. Seigar again assuming the presidency from 1914 to 1917. The following three years the Y.W.H.A. was not active.

It was Miss Ida Goffin, in 1920, who brought new life into the organization by envisioning a new aim and ideal, supervised group activity for young people, under the sponsorship of the Y.W.H.A. Immediately there followed an enthusiastic reorganization of the young women's Portland unit. Miss Goffin was elected its president.

In the same year the Y.W.H.A. joined the Y.M.H.A. as hosts to the Associated New England Y.M. and Y.W.H.A. annual convention that was held in Portland. The Y.W.H.A. was a vital factor in the plans for a Jewish Community Center in Portland.

With the purchase of Wilmot Street Community Center, the Y.W.H.A. began work in earnest. They inaugurated Jewish groups of Juniors and Intermediates, extending to the Jewish girls from six to sixteen their first opportunity for organized group activity, social and cultural education sponsored by a local Jewish organization.

Miss Ida Goffin was president for seven years, and over this period with the aid of Miss Bessie C. Tellan, director of the Y.W.H.A. Junior and Intermediate Clubs with a membership of over 150 girls, the record of accomplishment was unparalleled.

Following presidents were Mrs. Jacob Green, Mrs. Harry Carvel, Miss Gertrude Potter, Mrs. Maurice B. Cohen, Mrs. Edward J. Berman and Mrs. Theodore Wasserman.

During the existence of the Wilmot Street Community Center the Y.W.H.A. devoted the greater part of its program to its supervision and welfare. It concerned itself with the housing of the numerous activities for the young people, for their needs, equipment, education and entertainment. It recognized its responsibility in the finances necessary to keep the building open.

When in 1937 lack of funds threatened the closing of the Wilmot Street Community Center, it was Y.W.H.A. who called in a conference of Jewish leaders and laid groundwork for a campaign to raise the necessary money to save the building.

It was through this campaign that was brought to the Portland Jewish Community the realization of the need of a Jewish Community Center equipped and designed to fill the needs of every Jew in Portland, junior and adult.



HISTORY OF THE YOUNG MEN'S HEBREW ASSOCIATION IN PORTLAND

About the round table gathered our knights of history. Unlike those of King Arthur's day, they stood—for the round table was not intended for a center of assembly, however commendable its purposes might be. Harry Taylor had that round oaken table in his furniture store from which he displayed his wares. Still that did not prevent the boys from congregating there and discussing the feasibility of the organization of the Jewish youth of Portland.

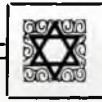
It was in these humble surroundings at 65 Middle Street about 33 years ago that the Young Men's Hebrew Association of Portland was first conceived and finally developed into an actuality. Its sponsors were Dr. John L. Davis, Samuel Sacknoff, H. Cain, and the owner of that famous round table, Harry Taylor.

Its first officers were Dr. John L. Davis, President; H. Cain, Secretary; and Samuel Sacknoff, Treasurer.

After three or four informal meetings in the back room of the furniture store and in the homes of its sponsors, the association procured rooms at the Bernstein building at the corner of Middle and Temple Streets.

Among the first acts expressive of this transition was the incorporation of the association in 1909 as the Y.M.H.A. of Portland. The membership and active support of the older men of the community were sought and the scope of the organization's work was broadened. The newly chartered Y.M.H.A. had assumed a program of purpose and activity which characterizes that of the Y.M.H.A. of today. Under the able guidance of Dr. John L. Davis as President; Henry R. Gordon, Vice President; Abraham Cohen, Secretary; and Samuel Sacknoff, Treasurer, the Y.M.H.A. began its career as a representative Jewish organization, recognized by the laws of the State. Among the active charter members were: David Beckelman, Jacob H. Berman, Israel Bernstein, Abraham Cohen, Samuel H. Comeras, Dr. John L. Davis, Joseph Druker, Abraham Goodman, David Kriger, Israel Marcus, Morris Oransky, Joseph Oransky, Samuel Robinson, Jacob Rubinsky, Samuel Sacknoff, Herman Sivovlos, Harry Snyder, Henry N. Taylor, Ellis Waterman, Morris Waterman.

With the financial and moral support of the Jewish business men of Portland assured, the association was enabled to lease the entire upper floor of the Boyd Building at the corner of Middle and Exchange Streets. The association not only played a prominent part in the Jewish life of Portland, but also extended its interest beyond local bounds. At the conference at Boston in 1910 to establish an associated Y.M.H.A. of New England, the Portland Y.M.H.A. was represented by two of its men, Israel Bernstein and Henry N. Taylor.



In 1913 a movement was under foot to raise funds for the purchase of a permanent home for the Y.M.H.A. As a result of the combined efforts of the Jewish Community, sufficient funds were raised to purchase a two story dwelling located at the corner of Locust Street and Cumberland Avenue. Unfortunately the undertaking of this project was financially a failure and the organization moved in 1916 to rented quarters at the corner of Temple and Federal Streets. Here the organization flourished and enjoyed its greatest success and expansion to date.

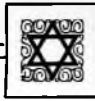
Then came our country's entrance into the World War. The Y.M.H.A. showed its patriotism by organizing a military company of 60 young men, under the leadership of Sergeant Henry N. Ebert from Fort McKinley, and by buying \$3,000.00 worth of Liberty Bonds and by contributing largely toward the Red Cross Fund. Over a third of our members at that time joined the National Guard and other military bodies. As a consequence, membership ranks in the Y.M.H.A. were depleted for enlistment in the Army and Navy, and quarters were abandoned.

During the reconstruction period following the World War, the Y.M.H.A. as a group was inactive until 1920 when an attempt at reorganization was made. At about this time the Y.W.H.A. had become a powerful organization in our midst and in conjunction, the Y's acted as hosts to the Associated New England Y.M. and Y.W.H.A.'s. Seemingly having served its purpose for that year, interest waned, and not until 1922 when through renewed interest and vigor by public spirited Jews headed by Morris Sacknoff as general chairman, a drive was commenced once more to attempt the purchase of a permanent home. The drive was a success and the building on Wilmot Street, which served for 15 years as the home for all Jewish enterprises, was purchased.

During the early years of the Wilmot Street Community Center under the Presidencies of William Perlin, James H. Davidson and Louis Bernstein the Y flourished and prospered. Lean years followed, the Y.W.H.A. seemingly having inherited the load and seemingly filling the need. Through the following years new and younger faces commenced to be associated with Y work and of these newer and younger men the following succeeded to presidency: Jacob Agger, Saul Gerber and Samuel Citrin.

In 1937 a revitalized Y.M.H.A., bigger and stronger than any previous administration, made its appearance due to the efforts of our spiritual leader, Rabbi Lewittes. The spark was rekindled at an informal gathering of a new group pledged to support and reawaken interest in the Y.M.H.A. and its objectives. This group composed of David Epstein, Maurice Cohen, Sidney Davidson, Myer Gordon, Theodore Perry, Ben Webber, Arthur Waterman, Shepard Cutler, Barnett I. Shur, James H. Davidson, Saul Sheriff, Jacob Agger, David Silverman, Myer Sacknoff and Abraham Gordon undertook to call a mass meeting at which David Epstein was elected President. For the first time in our Y history 250 Jewish men enrolled as members and continued on as an active organization to this very day. We have gone on record as pledging our full support and cooperation to the NEW COMMUNITY CENTER.

JAMES H. DAVIDSON,
THEODORE C. PERRY.



A TOUR OF THE JEWISH COMMUNITY CENTER BUILDING



EXTERIOR OF BUILDING

The new building of the Portland Jewish Community Center is designed along very simple lines, centrally located on Cumberland Avenue, a short distance from Portland's business district. The building presents a stately sight, rising above the surrounding buildings.

Five stories high, it is constructed of red brick with limestone trim. The exterior of the building and the welcoming door, with the beautiful sign of bronze reading "Jewish Community Center" are symbolic of the warmth and beauty one will find within. The directory boards located on the sides of the entrance designate the various departments of the building.

ENTRANCE AND MAIN FLOOR

Entering the small vestibule one finds the door leading into the main foyer. To the left of the foyer is the Ladies' Lounge, with a spacious cloakroom next to it; to the right, is the main and executive offices.

Leading off from the center of the foyer, with a door also near the cloakroom, is the main auditorium and gymnasium, capable of seating over 600 persons, and possessing one of the finest, completely equipped stages in this part of New England. The floor is marked for the following games: basketball, badminton, volley ball, deck tennis and paddle tennis.

Left of the auditorium and gymnasium are the elevator and staircase connecting to all floors. And now one goes downstairs to discover a scene of virile activity. Here is located the vault; then comes the basket room in which over 300 baskets are kept and in which the member's needs are stored; the men's shower and locker room with its full length lockers and massage table; the junior game room, where the little white ping pong balls seldom cease their rapid flight from one side of the table to the other, and where one may find enjoyment in playing a rubber horseshoe game and trying his skill at a golf driving net. Then to the left and into the ladies' shower and locker room with private lockers, dressing tables and a hair dryer.

MEZZANINE

Up the elevator to the Mezzanine floor and to the left is the conference room with its large table and comfortable chairs. To the left of the conference room is the men's lounge and smoking room. Here one feels is the place to make friends, for the place seems to invite intimate conversation. Then comes the balcony where members can sit in comfort and watch the activities in the auditorium and gymnasium. Beautiful new modern chairs have been placed in the balcony.



BANQUET HALL, SECOND FLOOR

Back into the foyer and up the beautiful staircase, one finds oneself on the second floor. Leading off from the small foyer is the Junior Reading and Sunday School Class Rooms. Off the class room is a small stackroom where the books and school equipment are kept. Next to the stackroom is the senior reading room. Here one may find many books of interest, current magazines and newspapers, from which members may select their reading matter and reference work. A beautiful large reception lounge is the next stop. In the homelike atmosphere of this room, the young men and women socialize.

As one leaves the lounge and enters a small foyer, to the left is the modern kosher kitchen and on the right is the dairy kitchen.

Then one comes to the Rose Room. This banquet hall is equipped to serve 300 guests. With its soft indirect lighting, venetian blinds and draperies, the Rose Room is carried out effectively in its color scheme.

Dietary laws are strictly observed in the Rose Room. There are the two distinct kitchens and separate dishes and utensils.

CLUB ROOMS, THIRD FLOOR

On the next floor is a complete modern serving kitchenette with a small ante room. Then one enters into a spacious club room where meetings of the various clubs and organizations are held. Back to a small hall which leads into another large reception foyer similar to the one on the floor below. Off from the foyer is a small ante room and into the Arts and Crafts room. Here are work benches and materials for those interested in arts and crafts. Back to the ante room and to the right is the Little Theatre and class room with a seating capacity of 250 persons. Here dramatic classes are held with a splendid opportunity for the talented members to express themselves.

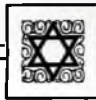
RECREATION CENTER, FOURTH FLOOR

Back through the ante room and the reception foyer and up the staircase to the fourth floor and one finds oneself in the recreation center of the building. To the left of the staircase are the refreshment booths seating over 30 persons. And now one enters the bowling alleys. Here one observes five new streamline alleys. The room is of modernistic design in buff and blue. Directly in back of the alleys is the gallery runway, seating over 100 spectators. Next is the billiard room with two tables and then comes the regulation four wall hand ball court, with the decorations done in the latest seacrest green to eliminate all possible eye strain.

Ample room is provided for visitors and guests who might enjoy watching those playing. The recreation center is so arranged as to form a complete recreational unit.

On the way down to the main floor, one can not help but feel that the Portland Jewish Community Center has been planned to provide for the youth and adult, a Cultural, Social, Organization and Athletic Center, perfected to the last minute detail.

LESTER M. WILLIS.



Portland Jewish Community Center

OFFICERS

PRESIDENT	-	-	-	-	-	LOUIS BERNSTEIN
VICE-PRESIDENT	-	-	-	-	-	MRS. EDWARD J. BERMAN
SECRETARY	-	-	-	-	-	MRS. THEODORE WASSERMAN
TREASURER	-	-	-	-	-	EDWARD J. BERMAN
CLERK	-	-	-	-	-	MAURICE DAVIS

DIRECTORS

Rabbi M. Lewittes <i>Honorary Chairman</i>	Miss Ida Goffin	Hyman Mersky
Edward J. Berman	Robert Goldstein	Sam Novick
Mrs. E. J. Berman	Leo Golodetz	Miss Gertrude Potter
Israel Bernstein	Dr. Solomon Golodetz	Jacob Rubinsky
Mrs. Israel Bernstein	William Goodman	Mrs. Anna Sacknoff
Louis Bernstein	Abraham Goodside	Morris Sacknoff
Hyman Boxstein	Julius Greenstein	Jacob Sapiro
Mrs. Elias Caplan	Leon Herman	Sidney P. Schwartz
Saul G. Chason	Hyman Jacobson	Abraham Seigal
Samuel Citrin	Silas Jacobson	Mrs. Samuel Seiger
Benjamin Clayman	Alexander Kaatz	Max Simonds
William Cohen	Miss Jane Kodis	Barnett Shur
Aaron Davidson	Mrs. A. L. Kramer	Oscar Tabachnick
Mrs. Harry E. Davis	David Lavin	Mrs. Ben Troen
Maurice Davis	George I. Lewis	Mrs. Theodore Wasserman
Mrs. Maurice Davis	Abraham S. Levey	Nathan Weinman
David Epstein	Louis Matson	Robert Weinstein
	Mrs. Louis Matson	Joseph Wigon

ADVISORY COUNCIL

Phillip Abrahamson	Shepard Cutler	Louis Weinman
Jacob H. Berman	James H. Davidson	Louis E. Weiner
Joseph Brenner	Sidney Davidson	Carl Webber
Harry Carvel	David Ebenstein	Harry Sivovlos
Jacob Citrin	George Finberg	Sam Seiger
Charles Cohen	Abraham Isenman	Phillip Reuben
Samuel Cohen	Harris Lait	Sam Pinansky
	Max L. Pinansky	

NORMAN I. GODFREY

EXECUTIVE DIRECTOR



Campaign Committee for Raising Funds to Purchase, Remodel and Equip New Center

EXECUTIVE CHAIRMAN	-	-	-	LOUIS BERNSTEIN
FUNCTIONS CHAIRMAN	-	-	-	MRS. MAURICE DAVIS
SPEAKERS CHAIRMAN	-	-	-	ROBERT GOLDSTEIN
PUBLICITY CHAIRMAN	-	-	-	JULIUS GREENSTEIN
SPECIAL GIFTS CHAIRMAN	-	-	-	MORRIS SACKNOFF
PROSPECTS CHAIRMAN	-	-	MRS. THEODORE WASSERMAN	
CAMPAIGN ORGANIZATION CHAIRMAN	-	-	JOSEPH WIGON	

CAPTAINS—MEN'S DIVISION

David Epstein	Philip Reuben
Dr. Solomon Golodetz	Harold Lebovitz
Carl Webber	Maurice Wagman
Max D. Davis	Abraham Seigal
Hyman Jacobson	Joseph Brenner
William Goodman	David Rubinoff

CAPTAINS—WOMEN'S DIVISION

Mrs. Louis Matson	Mrs. Maurice Wagman	Mrs. David Cutler
Mrs. Abraham Kramer	Mrs. David Epstein	Mrs. Thomas Livingston
Mrs. Anna Sacknoff	Mrs. Ben Troen	Mrs. Harris Lait
Mrs. Israel Bernstein	Mrs. Samuel Seiger	Mrs. Sara Epstein
Miss Doris Goodside		Mrs. Leo Golodetz

SPECIAL GIFTS SOLICITORS

Edward J. Berman	Leo Golodetz
Israel Bernstein	Abraham Goodside
Aaron Davidson	George I. Lewis
Sidney Davidson	Morris Sacknoff
David Ebenstein	Max Simonds



STANDING COMMITTEES

EXECUTIVE

CHAIRMAN:

Louis Bernstein

MEMBERSHIP

CHAIRMAN:

Edward J. Berman

FINANCE

CHAIRMAN:

Joseph Wigon

EDUCATION

CHAIRMAN:

Israel Bernstein

ATHLETICS

CHAIRMAN:

Dr. Cyrus K. Briggs

HOUSE

CHAIRMAN:

Morris Sacknoff

SOCIALS

CHAIRMAN:

Mrs. Edward J. Berman

CLUBS

CHAIRMEN:

Boys: Jacob E. Rubinsky

Girls: Mrs. Abraham Kramer

MUSIC

CHAIRMAN:

Harold K. Halpert

ART

CHAIRMAN:

Mrs. Abraham Simonds

DRAMA

CHAIRMAN:

Mrs. Gerald Waxman

CAMP

CHAIRMAN:

Morris Greenberg

SOCIAL SERVICE

CHAIRMAN:

Mrs. Israel Bernstein

CIVICS

CHAIRMAN:

Louis Bernstein

LIBRARY

CHAIRMAN:

Dr. Solomon Golodetz

FILMS

CHAIRMAN:

Leo Golodetz

PUBLICITY AND PUBLICATIONS

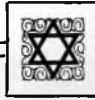
CHAIRMAN:

Jane Kodis

LEGAL

CHAIRMAN:

Maurice Davis



The Jewish Center Offers You A Complete Program

The Jewish Community Center seeks to provide in its program wholesome and creative opportunities for expression in leisure time activity—cultural, recreational and social. The program endeavors to bring to all, young and old alike, the rich cultural heritage of our people, and in addition aims to develop Jewish living in America in harmony with the democratic principles of our country. To make our lives more meaningful, to enrich the individual personality and to fortify and unify our group life are the objectives which we seek to accomplish through the program outlined below.

Membership is open to the entire family, mothers, fathers, sons and daughters. From the varied list of activities suggested here will surely be found some appealing to everyone. As a new adventure in the life of Portland Jewry the program will need to explore the many phases of Jewish life, and in this effort we seek your recommendations and suggestions.

EDUCATION

CLASSES in music, drama, dancing, arts and crafts.
INSTITUTE of Jewish Studies.
CONCERTS, recitals, plays, art exhibits.

LIBRARY—for reading and reference.
BOOK CHATS, open forums, play readings.
FINE ART motion pictures.

HEALTH AND RECREATION

CLASSES in gymnasium activity, weight normalizing, slenderizing.
SPORTS PROGRAM of basketball, volley ball, handball, softball, badminton, boxing and wrestling, deck tennis, paddle tennis.
FACILITIES—Gymnasium, showers, handball court, exercise rooms, boxing and wrestling rooms, game room, 5 bowling alleys, billiard room, golf driving net.

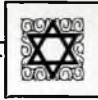
SOCIAL

CLUBS—Boy Scouts, Girl Scouts, Inter-fraternity and Sorority Council, etc.
SOCIAL ACTIVITIES—Open House, bridge parties, smokers, entertainments, holiday and civic celebrations.
Men's Lounge, Ladies' Lounge, Refreshment Bar.
A Center weekly to keep you well informed of activities.

JUNIORS AND INTERMEDIATES

GYMNASIUM CLASSES.
Art, crafts, drama and dancing groups. Clubs for special and general interest.
LIBRARY for reading and reference.
SOCIAL ACTIVITIES—including parties, entertainments, intermediate dances, holiday celebrations.
GAME ROOMS—pocket billiards, ping-pong, checkers, games.
SUMMER CLUB program consisting of trips, clubs, classes.
Camp Jaysee—The Jewish Center home camp.

NORMAN I. GODFREY, *Executive Director.*



CLASSIFICATION AND RATES OF MEMBERSHIP

1. CONTRIBUTING MEMBERSHIP - - - - - \$25.00 AND UP
 - a. FAMILY OF HUSBAND, WIFE AND CHILDREN 14 YEARS AND UNDER
 - b. INDIVIDUAL PERSON
2. FAMILY MEMBERSHIP - - - - - \$15.00
INCLUDES HUSBAND, WIFE AND CHILDREN 14 YEARS AND UNDER
3. BUSINESS AND PROFESSIONAL MEMBERSHIP - - - \$15.00
27 YEARS AND OVER
4. SENIOR MALE MEMBERSHIP - - - - - \$12.00
20 YEARS TO 26, INCLUSIVE
5. SUB-SENIOR MEMBERSHIP - - - - - \$8.00
AFTER HIGH SCHOOL AGE TO 19, INCLUSIVE
6. SENIOR FEMALE MEMBERSHIP - - - - - \$8.00
AFTER HIGH SCHOOL AGE AND OVER
7. INTERMEDIATE MEMBERSHIP - - - - - \$4.00
BOYS AND GIRLS, HIGH SCHOOL AGE
8. JUNIOR MEMBERSHIP - - - - - \$2.00
BOYS AND GIRLS, ELEMENTARY SCHOOL AGE
9. COLLEGE MEMBERSHIP - - - - - \$5.00
BOYS AND GIRLS ATTENDING COLLEGE
10. NON-RESIDENT MEMBERSHIP - - - ONE-HALF THE REGULAR RATE

All membership dues are on an annual basis.

All membership classes are unlimited in the use of the facilities of the center.

Guest privileges may be obtained upon application to the Executive Director.

"All persons of good moral
character are eligible to
membership."

From the Constitution of the
Jewish Community Center
of Portland.

